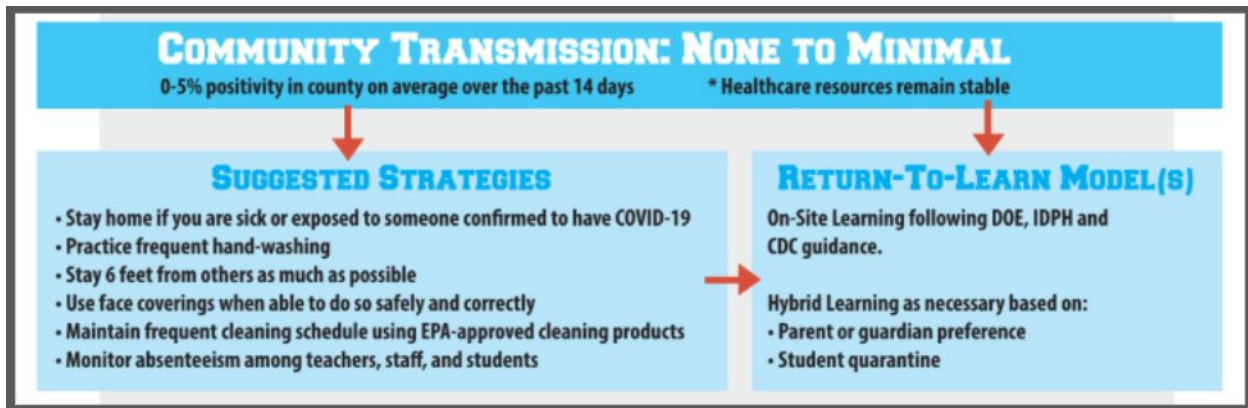
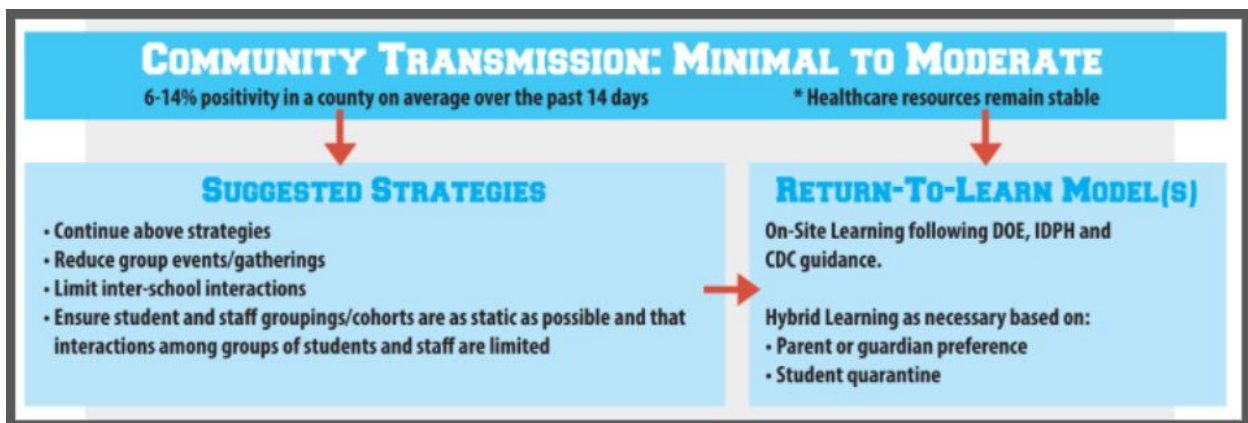


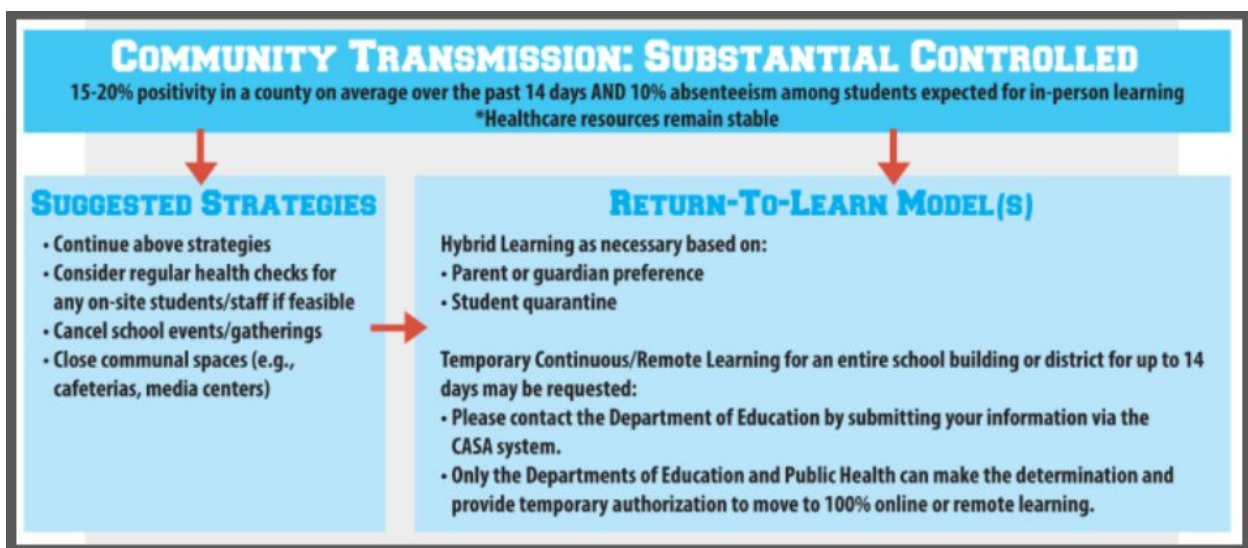
Community Transmission: None to Minimal



Community Transmission: Minimal to Moderate



Community Transmission: Substantial Controlled




Community Transmission: Substantial Uncontrolled

COMMUNITY TRANSMISSION: SUBSTANTIAL UNCONTROLLED
>20% positivity in a county on average over the past 14 days with healthcare resource capacity concerns

SUGGESTED STRATEGIES
State and local education and public health officials should work closely together to make decisions on school operations.

RETURN-TO-LEARN MODEL(S)
Temporary Continuous/Remote Learning for an entire school building or district for up to 14 days may be requested:

- Please contact the Department of Education by submitting your information via the CASA system.
- Only the Departments of Education and Public Health can make the determination and provide temporary authorization to move to 100% online or remote learning.

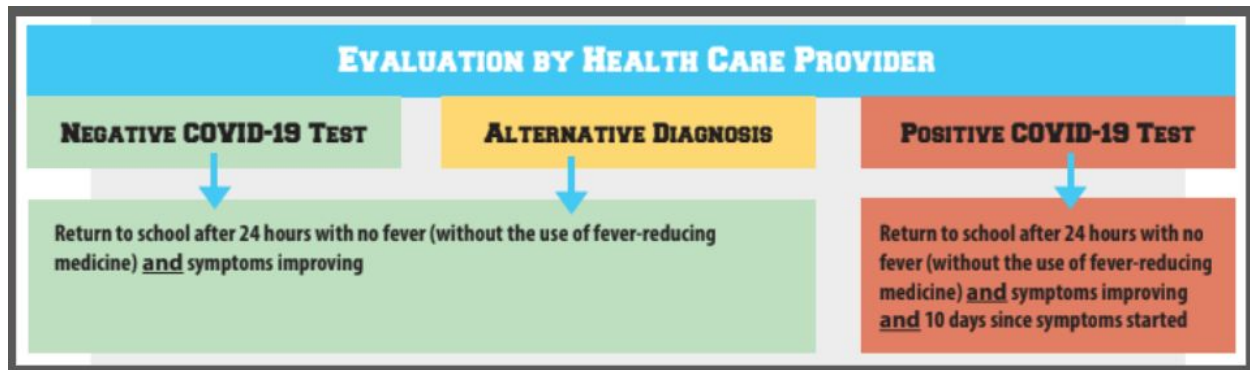


Symptoms

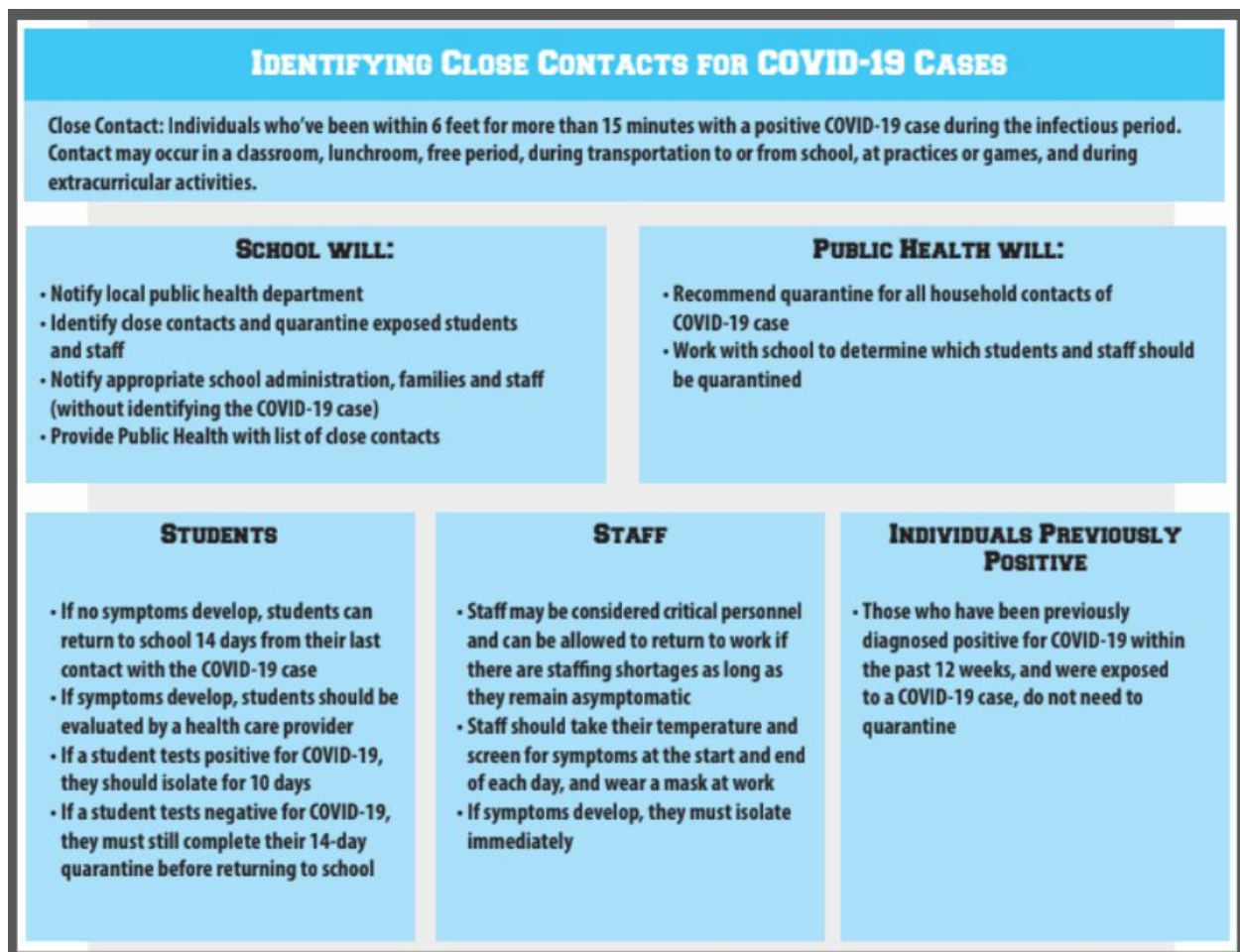
Students or staff displaying high risk symptoms listed below (at school) should report to the office and will be monitored by the school nurse in the quarantine/isolation space.

HIGH RISK SYMPTOMS	LOW RISK SYMPTOMS
New cough, shortness of breath or difficulty breathing, new loss of taste or smell	Fever, headache, muscle and body aches, fatigue, sore throat, runny nose, congestion, nausea, vomiting, diarrhea
Students and staff members should remain home when sick. Students or staff members with <u>any</u> high-risk symptom or <u>two or more</u> low risk symptoms should stay home and are advised to seek an evaluation by a health care provider.	

Evaluation by Health Care Provider



Identify Close Contacts for COVID-19 Cases



Scenarios

Scenario 1

Scenario 1: Close contact with someone who has COVID-19—will not have further close contact

I had close contact with someone who has COVID-19 and will not have further contact or interactions with the person while they are sick (e.g., co-worker, neighbor, or friend).

Your last day of quarantine is 14 days from the date you had close contact.

Date of last close contact with person who has COVID-19 + 14 days = end of quarantine



Please note if your quarantine starts at noon on day 1, then it would end at noon on the last day.

Scenario 2

Scenario 2: Close contact with someone who has COVID-19—live with the person but can avoid further close contact

I live with someone who has COVID-19 (e.g., roommate, partner, family member), and that person has isolated by staying in a separate bedroom. I have had no close contact with the person since they isolated.

Your last day of quarantine is 14 days from when the person with COVID-19 began home isolation.

Date person with COVID-19 began home isolation + 14 days = end of quarantine



Scenario 3

Scenario 3. Under quarantine and had additional close contact with someone who has COVID-19

I live with someone who has COVID-19 and started my 14-day quarantine period because we had close contact. What if I ended up having close contact with the person who is sick during my quarantine? What if another household member gets sick with COVID-19? Do I need to restart my quarantine?

Yes. You will have to restart your quarantine from the last day you had close contact with anyone in your house who has COVID-19. **Any time a new household member gets sick with COVID-19 and you had close contact, you will need to restart your quarantine.**

Date of additional close contact with person who has COVID-19 + 14 days = end of quarantine



Please note if your quarantine starts at noon on day 1, then it would end at noon on the last day.

Scenario 4

Scenario 4: Live with someone who has COVID-19 and cannot avoid continued close contact

I live in a household where I cannot avoid close contact with the person who has COVID-19. I am providing direct care to the person who is sick, don't have a separate bedroom to isolate the person who is sick, or live in close quarters where I am unable to keep a physical distance of 6 feet.

You should avoid contact with others outside the home while the person is sick, and quarantine for 14 days after the person who has COVID-19 meets the [criteria to end home isolation](#).

Date the person with COVID-19 ends home isolation + 14 days = end of quarantine



Please note if your quarantine starts at noon on day 1, then it would end at noon on the last day.